

---

**21.5 " -220AWE**

**USER'S GUIDE**

---

# IMPORTANT SAFEGUARDS

## Warnings:

1. Read all of these instructions Save these instructions for later use, please.
2. Unplug this monitor from the wall outlet before cleaning. Do not use liquid cleaners or aerosol cleaners. Use a damp cloth for cleaning.
3. Do not use attachments not recommended by the monitor manufacturer as they may cause hazards.
4. Do not use this monitor near water. For example near a bathtub, washbowl, kitchen sink, or laundry tub, in a wet basement, or near a swimming pool, etc...
5. Do not place this monitor on an unstable cart, stand, or table. The monitor may fall, causing serious injury to a child or adult and serious damage to the appliance. Use only with a cart or stand recommended by the manufacturer or sold with monitor. Wall or shelf mounting should follow the manufacturer's instructions, and should use a mounting kit approved by themanufacturer.
6. Slots and openings in the cabinet and the back or bottom are provided for ventilation, and to insure reliable operation of the television receiver and to protect it from overheating, these openings must not be blocked or covered. The openings should never be blocked by placing the monitor on a bed, sofa, rug, or other similar surface. This monitor should never be placed near or over a radiator or heat register. This monitor should not be placed in built-in installation such as a bookcase unless proper ventilation is provided.
7. This monitor should be operated only from the type of power source indicated on the marking label. If you are not sure of the type of power supplied in your home, consult your monitor dealer or local power company.
8. This monitor is equipped with a three-wire grounding type plug, a plug having a third (grounding) pin. This plug will only fit into grounding-type power outlet. This is a safety feature. If you are unable to insert the plug into the outlet. Contact your electrician to replace your obsolete outlet. Do not defeat the safety purpose of the grounding-type plug.
9. Do not allow anything to rest on the power cord. Do not locate this monitor where the cord will be abused by persons working on it.
10. Follow all warnings and instructions marked on the monitor.
11. For added protection for this monitor, when it is left unattended and unused for long periods of time, unplug it from the wall outlet. This will prevent damage to the monitor due to power-line surges.
12. Do not overload wall outlets and extension cords as this can result into fire or electric shock.
13. Never push objects of any kind into this monitor through cabinet slots as they may touch dangerous voltage points or short out parts that could result in a fire or electric shock. Never spill liquid of any kind on the monitor.
14. Do not attempt to service this monitor by yourself since opening or removing covers may exposeyou to dangerous voltage or other hazards. Refer all servicing to qualified service personnel.
- 15.Unplug this monitor from the wall outlet and refer servicing to qualified service personnel under the following conditions:
  - a. When the power cord or plug is damaged or frayed.

- b. If liquid has been spilled into the monitor.
  - c. If the monitor has been exposed to rain or water.
  - d. If the monitor does not operate normally by following the operating instructions. Adjust only those controls that are covered by the operating instructions as improper adjustment of other controls may result in damage and will often require extensive work by a qualified technician to restore the monitor to normal operation.
  - e. If the monitor has been dropped or the cabinet has been damaged.
  - f. When the monitor exhibits a distinct change in performance this indicated a need for service.
16. When replacement parts are required, be sure the service technician has used replacement parts specified by the manufacturer that have the same characteristics as the original parts. Unauthorized substitutions may result in fire, electricshock, or other hazards.

# Contents

1. Introduction.....	1-1
1.2 Package Overview.....	1-2
After unpacking, make sure that all of the following parts are included.....	1-2
1.3 Display overview.....	1-3
1.3.1 Front Screen.....	1-3
1.3.2 Rear View.....	1-3
1.4.1	
System Requirements:.....	1-5
Before installing the 220AWE,make sure your PC Operation system is Windows 2000,Window XP or Window Vista.....	1-5
1.4.2 Connection Procedure.....	1-5
1.4.3 Software Installation.....	1-6
If your PC operation system is Windows 2000 or Window XP. you must install driver before you usePen. If your PC operation system is Windows Vista, Pen input function will plug-n-play.....	1-6
Do the following to install the driver:.....	1-6
(1) Insert the 220AWE CD into the CD-ROM drive. The software install menu should automatically display.....	1-6
(2) Click on INSTALL DRIVER link and follow the prompts to install the driver software.....	1-6
(3) After complete the installation, make sure you can use your pen on the screen to move the cursor.....	1-6
2. Usage Procedures.....	2-1
2.1Notice when displaying screens at WXGA resolution.....	2-1
2.2 Using thePen.....	2-1
2.2.1 How to Use thePen.....	2-1
2.1.2 BasicPen Operations.....	2-1
2.2.3Pen Settings.....	2-3
2.2.4 Changing the Battery in thePen.....	2-5
2.2.5 Replacing thePen Tip.....	2-6
2.3 Using the OSD Menu.....	2-7
2.3.1OSD Buttons and Their Function.....	2-7
Appendix A.....	2-1
Troubleshooting.....	2-1
Appendix B.....	2-3
Appendix C.....	2-4
Appendix D.....	2-5
Note Taking: Offers a variety of writing tools for you to send free handwriting and colorful drawings,.....	2-5
FreeNotes.....	2-5
Windows Journal.....	2-5

Microsoft PowerPoint.....	2-5
Power Presenter.....	2-5
PowerPoint.....	2-5
Digital inking: Special digital inking in Word, Excel or Word pad. You can add your digital signature and freely modify documents.....	2-5
Office 2007.....	2-5
Office Ink.....	2-5
Handwriting recognition :computer receive intelligible handwritten input.....	2-5
AppendixD Main Function list	

# 1. Introduction

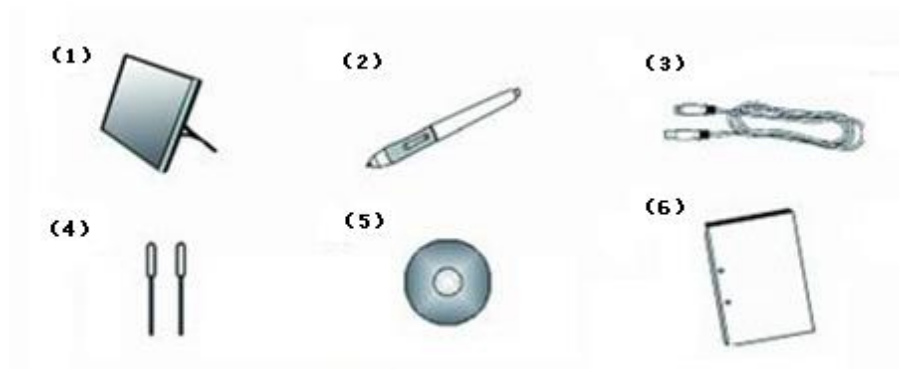
## 1.1 About the Product

tablet monitor combine the advantages of on LCD monitor with Pen Input Technology. It utilizes electromagnetic technology which guarantees high tablet resolution and fast pen tracking speed. You could work more freely and effective by using pen on screen. The monitor features include the following:

- ℓ Active matrix TFT LCD technology
- ℓ 1920 (H)×1080 (v)resolution
- ℓ 21.5"±viewable display area
- ℓ Pen-Input technology
- ℓ Tablet resolution:2000Lpi
- ℓ Tablet Pressure: 1024 levels
- ℓ Direct Analog signal Input
- ℓ Dual-hinge Stand (-5 ~ 180 degree )

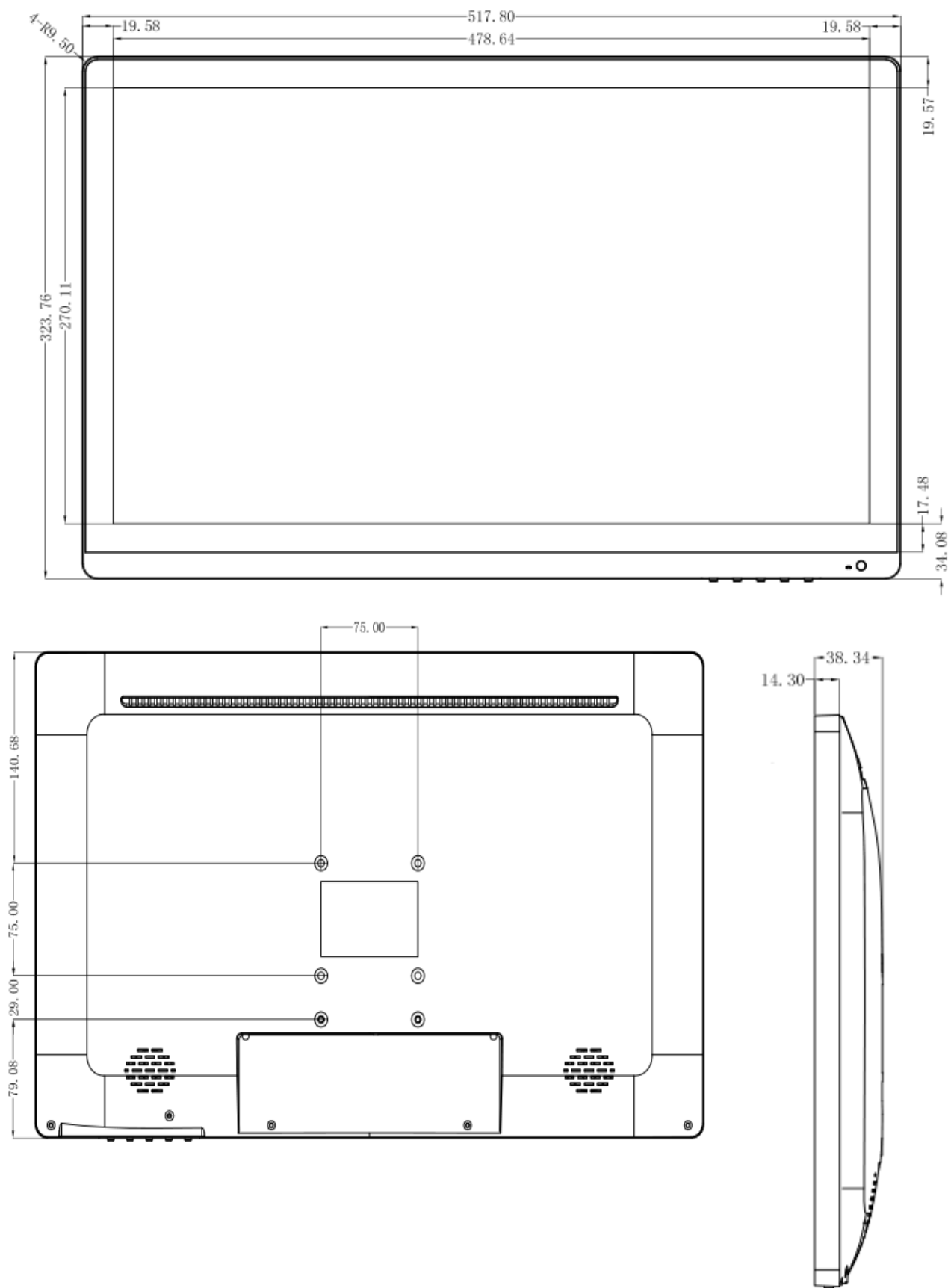
## 1.2 Package Overview

After unpacking, make sure that all of the following parts are included.



No.	Name	Qty
(1)	21.5-inch LCD monitor	1
(2)	Stylus pen	1
(9)	RGB cable	1
(4)	Pen tip replacement pin set	1
(5)	Software (CD-ROM) (*1)	2
(6)	User's Guide	1

### 1.3 Display overview



(1) LCD and tablet operating area

Receives text and graphical information entered with thePen, and transmits the data to a PC.

(2) External control buttons

1	Indicator LED	4	Up adjust
2	Power Switch	5	Down adjust
3	Menu	6	Auto

## 1.4 Installation

### 1.4.1 System Requirements:

Before installing the , make sure your PC Operation system is Windows 2000, Window XP or Window Vista.

### 1.4.2 Connection Procedure

(1) Connect the RGB cable to the VGA input port on the side of the , and tighten the screws to fasten. Connect the other end of the cable to the PC VGA port, and tighten the screws to fasten.

(2) Connect the USB cable to the USB port on the side of the . Connect the other end of the cable to a USB port on the PC.

(3) Connect the power cable from the AC socket of the LCD to the AC mains socket nearby.

(4) Connect the audio cable from the AC socket of the LCD to the AC mains socket nearby.

(5) Connect the pen power cable to the LCD socket nearby.

### 1.4.3 Software Installation

.If your PC operation system is Windows 2000 or Window XP. You must install driver before you usePen. If your PC operation system is Windows Vista, Pen input function will plug-n-play.

Do the following to install the driver: CD into the CD-ROM drive. The software install

(1) Insert the menu should automatically display.

(2) Click on INSTALL DRIVER link and follow the prompts to install the driver software.

(3) After complete the installation, make sure you can use your pen on the screen to move the cursor.

**Note: Recommend you install driver in Windows Visa system. The driver provides some advanced function. For the details please see the software E-manual.**



## 2. Usage Procedures

This section describes the basic procedures for using . For information on using advanced features, see the -220AWE Software and User's Guide.

### 2.1 Notice when displaying screens at WXGA resolution

Be sure to set the monitor refresh rate to 60 Hz if displaying the -220AWE at resolution (1920X1080). If used at a refresh rate other than 60 Hz, the pen may not operate correctly due to noise from the LCD panel. (For details on how to make settings, see your PC manual and other documentation.)

### 2.2 Using the Pen

This section describes how to use the -220AWE Pen.

#### 2.1.1 Basic Pen Operations

The Pen can be used in the same way as a mouse. Under the Pen's default settings, the pen tip button is set to correspond to the left mouse button. When Windows is open, the pen tip button may be used to perform the following mouse actions.

##### Clicking

Press the pen tip against the display with a suitable amount of force and then release it quickly.

##### Double-clicking

Press the pen tip against the display with a suitable amount of force and then release it, two times in a row.

The Pen can be used in the same way as a mouse. Under the Pen's default settings, the pen tip button is set to correspond to the left mouse button. When Windows is open, the pen tip button may be used to perform the following mouse actions.

##### Clicking

Press the pen tip against the display with a suitable amount of force and then release it quickly.

##### Double-clicking

Press the pen tip against the display with a suitable amount of force and then release it, two times in a row.

##### Dragging

Press the pen tip against the display with a suitable amount of force and then move the pen while keeping it pressed against the display (without releasing it from the display).

The permitted Pen input angle range is 30° in any direction from a position where the Pen is perpendicular to the display surface. Note that if the pen is tilted at an angle greater than 30°, its coordinates may not be input correctly.

### 2.2.3 Pen Settings

ThePen has one pen tip button, and two side buttons. Mouse actions can be assigned to these three buttons. The default button settings are summarized in the following table.

Button	User action	Corresponding mouse action	
		Windows XP/2000	Windows Vista
Pen tip	Press the pen tip against the display.	Mouse left-click	Mouse left-click
Side Button No. 0	Press the button with the pen tip slightly removed from the screen (5 mm or less).	Mouse left double-click	Mouse right-click Pen tip + Barrel
Side Button No. 1	Same as above.	Mouse right-click	Barrel

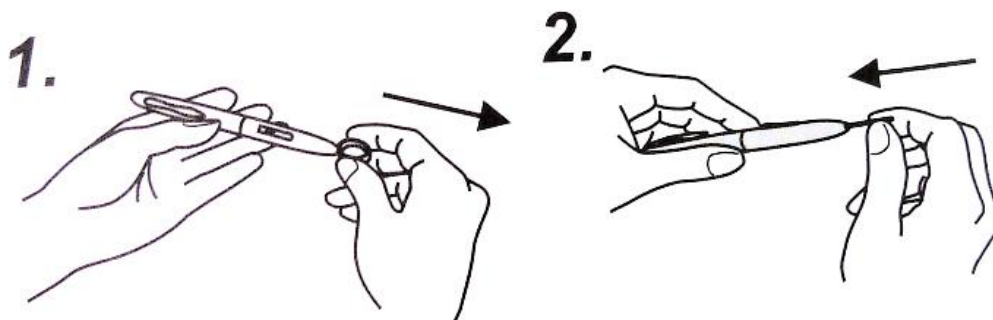
For details on changing the button settings, see the 220AWE Software E-manual

**Note:** Do not press the side button while pressing the pen tip against the screen.

### 2.2.4 Replacing the Pen Tip

When thePen tip wears down and becomes too short, replace it as described below.

- (1) Using the special pin set, remove the New Boss Pentip.
- (2) *Insert a new pen tip into the pen.*



## 2.3 Using the OSD Menu

The OSD menu is used when adjusting the LCD screen. OSD is an abbreviation for On-Screen Display. The OSD feature allows you to view and adjust the settings for the display on the screen.

### 2.3.1 Control Functions

The monitor digital control functions are located on the front panel. They are shown in the figure below and described in the following paragraphs.

### 2.3.2. Function Select

With the  $\triangle$  and  $\nabla$  knobs, you can adjust the speakers volume.

Press the “1” knob to show the OSD menu. Then use the  $\triangle$  and  $\nabla$  knobs to select a function.

Press the “2” knob to close the OSD menu.

You can hold the “2” knob for more than 3 second to adjust the image quality automatically.

The OSD menu will close automatically after 3-10 seconds without operation and saves any changes you have made.

### 2.3.3. Function Adjustment

#### 1.Signal Select



VGA - Select the image signal coming from the VGA cable.



DVI - Select the image signal coming from the DVI cable.(option)



Exit - Close the Signal Select OSD menu.

#### 2.Video



Brightness - Adjust the luminance level in the image.



Contrast - Adjust the difference in luminance between light and dark areas of the image.



Exit - Close the Video OSD menu.

#### 3.Audio



V - Adjust the volume of speakers.



Exit - Exit the Audio OSD menu.

#### 4.Color

Color Temperature



User - Adjust the R.G.B. gain level.



6500K - Select color temperature to 6500 K.



9300K - Select color temperature to 9300 K.



Exit - Close the Color Temperature OSD menu.



Exit - Close the Color OSD menu.

#### 5.Image



Auto Tune - Adjust geometry of the image automatically.



Clock - Adjust the horizontal sync size of signal.



Phase - Adjust the horizontal sync phase of signal.



H. Position - Adjust the horizontal position of the image.



V. Position - Adjust the vertical position of the image.



Exit - Close the Image OSD menu.

#### 6.Language



-Sets the language of the OSD windows.

#### 7.Tools

OSD Control



OSD Timer - Setting the OSD menu display time.



OSD H. Position- Adjust the horizontal position of the OSD menu.



OSD V. Position- Adjust the vertical position of the OSD menu.

Exit  the OSD Control OSD menu.

Recall - Recall the factory default setting.



Sharpness - Adjust the picture display more clear.



Exit - Close the Tools OSD menu.

## 8.Exit



- Close the OSD menu.

# Appendix A

## Troubleshooting

First, check adjustments and handling methods and check for poor cable connections. Those are often the causes of problems when nothing is actually broken.

### Screen display-related problems

In this case	Check this	And do this
PC screen does not 220AWE display on220AWE.	Is the PC power on?	To deal with problem see the PC manual and other documentation.
	Is the RGB cable connected to the PC and -220AWE properly?	Connect the RGB cable correctly.
	For laptop PCs, is external (RGB) output selected?	Connect cable after starting up the PC, or switch to external (RGB) output at the screen display mode settings. (Method of switching differs by PC. For instructions, see the PC manual and other documentation.)
	Was LCD and monitor switching done right (may be assigned to a function key)?	Set so LCD and monitor are both selected, or that just the monitor is selected. (For details on selection, see the PC manual and other documentation.)
	Other	Contact technical support.

## pen-related problems

In this case	Check this	And do this
Stylus pen does not operate.	Software maybe damaged or may not be installed correctly.	Uninstall Software, and then reinstall. (For details on install how to install software, see Software E-manual)
	Is battery worn out?	Replace Pen battery. (For details on how to change the battery, see “2.2.4 Changing the Battery in the Pen” on page 2-4 of this User’s Guide.)
	Is pen tip worn down?	Check if the pen tip is worn down or is too short. (For details on how to replace the Pen tip, see “2.2.5 Replacing the Pen Tip” on page 2-5 of this User’s Guide.)
	Are there any electronic devices located nearby the -220AWE such as microwave ovens or radio transmitters that emit electromagnetic noise?	This product is susceptible to electromagnetic noise, so use the -220AWE away from devices that emit noise.
	Other	Restart Windows and Software. Contact technical support.
Stylus pen tip and pencursor positions do not match.	Did you calibrate the pen position?	We do have built-in a proper calibration setting in -220AWE. The additional calibration will alter the racy. Please cancel the calibration you did to recover to the default one.
	Other	Contact technical support.

# Appendix B

## System Specifications

Item		Specification
Product name		220AWE
Display characteristics	Driver type	Active-Matrix Liquid Crystal Display (TFT)
	Effective screen size	21.5inches
	Resolution	1920(H)×1080 (v)
	Pixel pitch	0.297 x0.297 mm
	Standard colors	16.7M (8 bits/color)
	Brightness	250 cd/m <sup>2</sup>
	Contrast ratio	5000 : 1
	Viewing angles	178 °(H), 178(V) °
Digitizer characteristics	Input system	Electromagnetic induction
	Pen	Stylus pen (Uses one AAA alkaline dry cell; battery life: approximately 1800 hours*)
	Tablet resolution	2000Lpi
	Pen Pressure	1024 levels
	Reading racy	±0.5 mm(center)
	Tracking speed	Approximately180 points per second
	Interface	USB interface (USB2.0)
Input/output	Input	Dsub 15-pin (analogue RGB)
	Input	DVI25-pin
Environmental conditions	Temperature	During use: +10 – +35 ℃; in storage:-20–+60 ℃
	Humidity	During use: 10-80% (nocondensation); in storage: 5-95% (no condensation)
Power consumption / power supply		40 W or less (4W or less in power saving mode) / AC in
Stand adjustment		Adjustable in the range of -5 °to 180 °
Compatible operating systems		Windows 2000/XP/VISTA/7; MAC 10.2.8 above

\* Battery life varies depending on the temperature and humidity of the usage environment.



# Appendix C

**Factory Preset Timing Table**

No.	Resolution	Refresh Rate (Hz)	Source
1	720×400	70	VGA,DVI
2	640×480	60, 66, 70, 72, 75	VGA,DVI
3	800×480	60	VGA,DVI
4	800×600	56, 60, 70, 72, 75	VGA,DVI
5	832×624	60	VGA,DVI
6	1024×768	60, 70, 72, 75	VGA,DVI
7	1024×800	73	VGA,DVI
8	1152×864	60, 70, 75	VGA,DVI
9	1152×870	75	VGA,DVI
10	1152×900	66, 76	VGA,DVI
11	1280×720	60, 75	VGA,DVI
12	1280×768	60, 70, 75	VGA,DVI
13	1280×960	60, 75	VGA,DVI
14	1280×1024	60, 70, 75	VGA,DVI
15	1440×900	60	VGA,DVI
16	1680×1050	60	VGA,DVI
17	1600×1200	60	VGA,DVI
18	1920×1080	60	VGA,DVI
19	1920×1200	60	VGA,DVI